

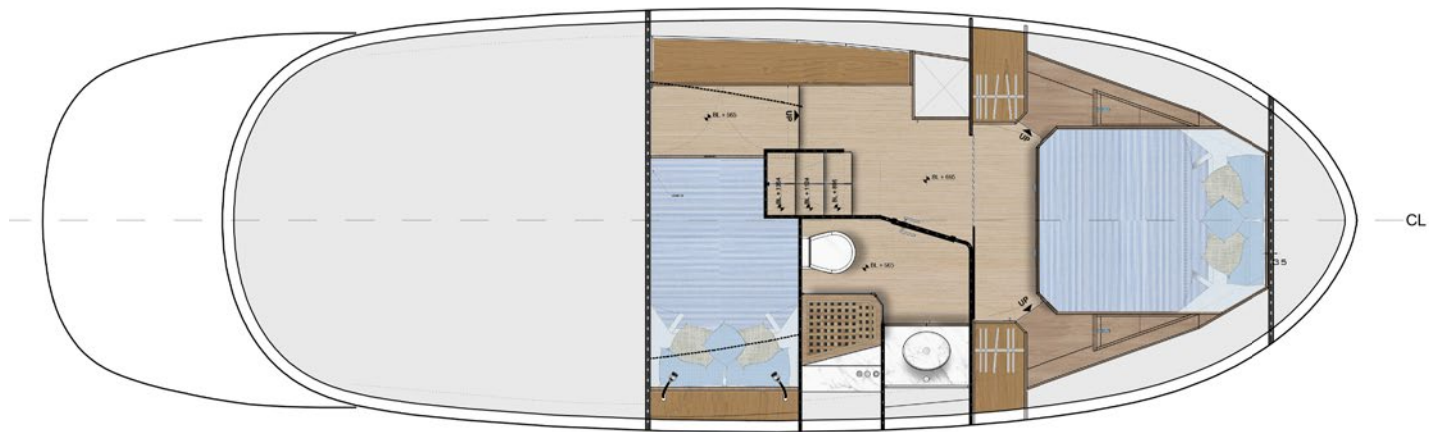
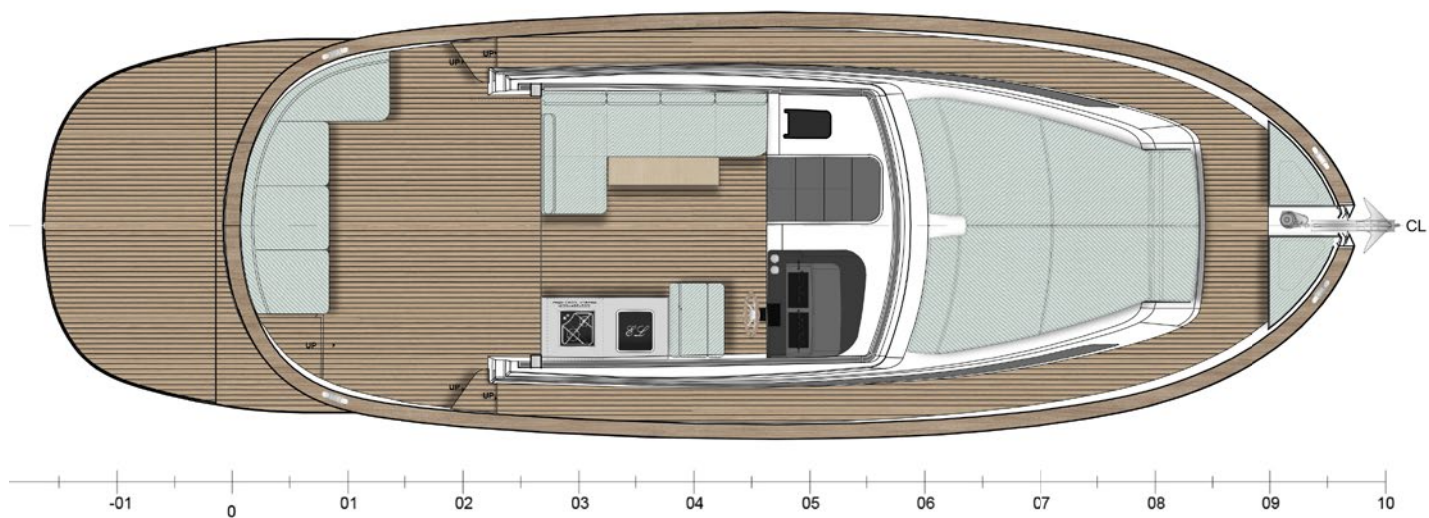


[apreamare.it](https://apreamare.it)

  
**apreamare**  
MEDITERRANEAN YACHTING CULTURE

**GOZZO** **38**  
**CABIN**  
EUROPEAN STANDARD EQUIPMENT

# GOZZO <sup>38</sup> C A B I N



## 1 PROPULSION

2 X VOLVOPENTA D4-270hp DPI - stern drive

2 X VOLVOPENTA D4-320hp SH - shaft line

## 2 SPEED

|                | VP D4 270 DPI |       | VP D4 320 SH |
|----------------|---------------|-------|--------------|
| Maximum speed  | 30            | knots | 28           |
| Cruising speed | 25            | knots | 23           |

## 3 RANGE

|                | VP D4 270 DPI |      | VP D4 320 SH |
|----------------|---------------|------|--------------|
| Maximum speed  | 217           | n.m. | 144          |
| Cruising speed | 208           | n.m. | 202          |

## 4 MAIN DIMENSIONS

|                                     |       |            |              |
|-------------------------------------|-------|------------|--------------|
| Length overall (LOA)                | 11,45 | metri/feet | 37 ft. 7 in. |
| Hull/homologation length            | 9,95  | metri/feet | 32 ft. 8 in. |
| Waterline length                    | 9,64  | metri/feet | 31 ft. 8 in. |
| Maximum beam                        | 3,70  | metri/feet | 12 ft. 2 in. |
| Draft                               | 0,94  | metri/feet | 3 ft. 1 in.  |
| Displacement unladen                | 8,0   | ton./lb.   | 17637        |
| Displacement laden                  | 10,0  | ton./lb.   | 22046        |
| Max. number of persons on board     | 14    |            |              |
| Navigation/homologation category CE | B     |            |              |

## 5 ADDITIONAL DATA

Variable geometry hull type with support skids

|                                   |      |              |              |
|-----------------------------------|------|--------------|--------------|
| Maximum height for transportation | 4,00 | metri/feet   | 13 ft. 1 in. |
| Fuel tank capacity                | 700  | lt./US gals. | 185          |
| Fresh water tank capacity         | 200  | lt./US gals. | 53           |
| Black water tank capacity         | 50   | lt./US gals. | 13           |

**N.B.** All data's are merely indicative, refer to a standard model, and therefore have no contractual value. Apreamare, in the light of a continuous improvement, reserves the right to change and/or update them at any time and without prior notice.

# EXTERIOR

## HULL AND DECK

1000 W electric winch with control in the main pilot station and at bow

Access gate at stern in fiberglass, manual opening

Access to the engine room with manual opening fiberglass hatch

Aft sofa with cushions

AISI 316 fairleads (2) at bow

AISI 316 mooring cleats (2) at aft and (2) at bow

AISI 316 steel mast with navigation lights

Anchor chain: 8 mm thick, 50 mt long

Antifouling

Berthing hook housed under gunwale

Bow sunbed with cushions

Fiberglass hard top painted in black

Fiberglass hull painted in white gelcoat

Fire-extinguisher

Flagstaff

Fresh water fill on starboard of the superstructure

Fuel fill installed on portside of the superstructure

Horn for acoustic alarm

Manual foldway swim ladder in the stern platform

Nr. 2 wipers

Painted stripe and waterline (colour chosen by the customer)

Side windows dinette with manual opening

Stainless steel deck equipment

Steel handrail

Stern shower with cold water

Teak wood gunwale

Teak wood of cockpit, sidewalks and stern platform

Tempered glass front windscreen

Trefoil anchor – weight 10 kg

Waste deck filler installed on the port side on the aft sunbed

## PILOT STATION

Aluminium steering wheel covered in black leather

Black painted fiberglass dashboard

Dinette furniture with pilot seats and cushions

Display with engine-monitoring function

Engine – control levers

Hydraulic steering

Magnetic compass

Rudder angle indicator, trim tabs controls, winch control, bilge pumps switch, horn button, navigation

lights switch, anchorage light switch, dashboard lights, cockpit lights switch, exhaust fans switch in

engine room



# INTERIOR

## DINETTE

Furniture equipped with fiberglass sink, water tap, 85 lts fridge and cabinet with shelves holders

Nr. 1 plexiglass opening porthole

Sofa on portside with cushions

White lacquered wooden cockpit table with steel support

## MASTER CABIN

220 V sockets

Curtains

Double bed with mattress, pillows, bed cover and nr. 2 drawers

Lighting system with strip led on the ceiling

Nr. 2 plexiglass fixed window

Nr. 2 wardrobes

Nr. 3 plexiglass opening porthole (nr. 1 at bow, nr. 2 on the side)

Sliding closing door

Upholstered ceiling

Wooden bulkheads

Wooden floor

Wooden furnitures

## BATHROOM

220 V socket

Bathroom accessories: liquid soap dispenser, spare toilet roll holder, wall-mounted toilet brush holder, towel holder, cloche hander (2)

Bathroom cabinet with glass washbasin

Electric toilet

Lighting system with strip led on the ceiling

Mirror

Nr. 1 plexiglass opening porthole

Separated shower with glass doors and stainless-steel profile

Shower with seat and teak grating

Upholstered ceiling

## GUESTS' CABIN

220 V sockets

Curtains

Four-doors cabinet

French size-bed with mattress, pillows and bed cover

High pantry cabinet

Lighting system with strip lead on the ceiling

Upholstered ceiling

Wooden bulkheads

Wooden floor

## ENGINE ROOM

12 V water pump

Automatic bildge pump

Electric bildge pump (manual)

Exhaust fan for engine room cooling

Fresh water tank (200 lts)

Fuel filters for engines

Fuel system remote controls for emergency stop

Nr. 2 engine batteries (180 Ah)

Nr. 2 engine exhaust

Nr. 2 engines on vibration-damping mounts

Nr. 2 service batteries (225 Ah)

Nr. 2 steel fuel tanks (350 lts each)

Nr. 4 lights in engine room

Soundproofing and heating insulation

Waste water tank (55 lts)

#### **SYSTEMS**

220 V A.C. and 12 V D.C. electric system with electric panel and magnetothermic switch (lower deck)

Bilge water system: nr. 2 electric pumps in the engine room (automatic and manual), nr. 1 electric pump in interior compartments

Cathode-operated protection system with zinc anodes

Electric toilet operating on fresh water

Fire-fighting system

Flap system with hydraulic pump

Fresh water system





Apreamare Yachts  
Via Terragneta, 72 - 80058 Torre Annunziata (NA)  
Tel: +39 081 537 8411  
[www.apreamare.it](http://www.apreamare.it)